

EZ Sensor

The Premium Choice For Your Image

EzSensor is the latest entry in the family of digital radiographic imaging products from VATECH. Rounded corners, smooth edges and reinforced cable connection are the results of a completely new design concept focused on reliability, durability and patient comfort.



What is the EzSensor?

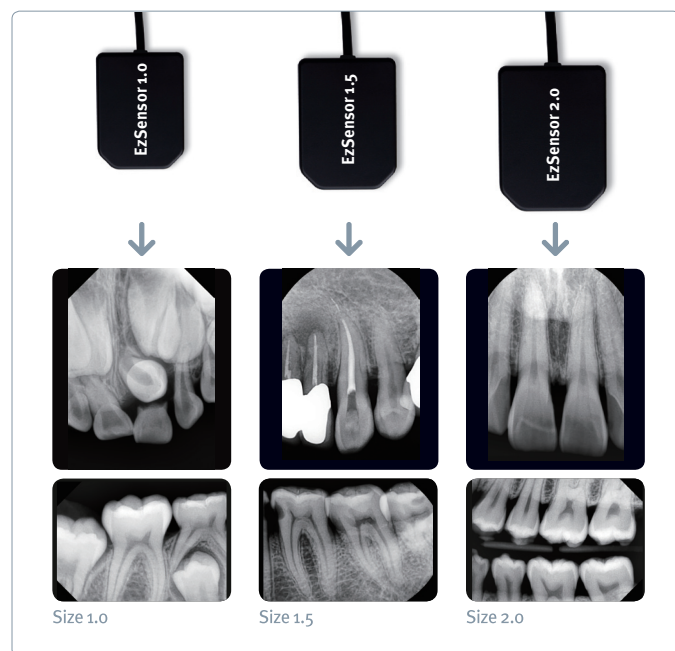
- ▶ Flexible size selection based on diagnostic purpose :Size 1.0 /1.5/ 2.0
- ▶ High quality clear images
- ▶ Ergonomic design :
Slim and rounded corner exterior
- ▶ Fast & efficient workflow
- ▶ High sensitivity for supreme quality,
low dose imaging
- ▶ Ensured durability through numerous tests
- ▶ Easy to use : Customized RINN holder system available
- ▶ Active area according to size

Mode	Size 1.0	Size 1.5	Size 2.0
Active Area	30x20 mm	33x24 mm	36x26 mm
Purpose	Narrow Arch (child, female)	Normal (female, male)	Bitewing, Big Arch

Values at a glance

The Superior Image Quality

EzSensor is based on the CMOS APS (Active Pixel Sensor) technology. It provides consistently higher resolution and clearer images for accurate diagnosis & treatment planning.



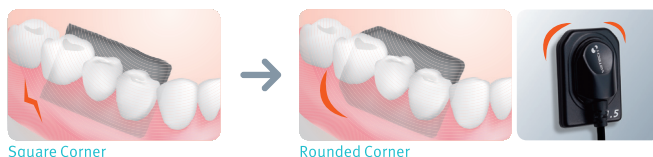
► Durability

The EzSensor's unique design makes itself extremely durable. The exterior is made of rugged aluminum and the interior is designed to absorb the external shock. Furthermore, a reinforced, flexible cable attachment protects the sensor from excessive bending.



► Ergonomic

EzSensor is slim and is designed with rounded corners to ensure complete patient comfort and easy positioning. These ergonomic features of the sensor offer exceptional patient satisfaction upon image acquisition.



► Easy to Use

Customized RINN Holder (XCP-DS) for EzSensor 1.5 (Option)
4 types of color for intuitive discernment of use: Bitewing, Anterior, Posterior, Endodontic placement.



Fast & Efficient Workflow

Experience high efficiency from EzSensor with its unmatched simplicity and reliability.

EzSensor offers you faster image acquisition and real time transmission.



Specification

Detector	CMOS	Theoretical Resolution	14.2lp/mm
Pixel Size	35µm	Total Cable Length	6m (sensor cable + control box cable to PC)
Dynamic Range	12bit	Dimension [W x L x T]	Size 1.0 26.1 x 36.8 x 4.95mm [1.03 x 1.45 x 0.19inch] Size 1.5 29.2 x 38.7 x 4.95mm [1.14 x 1.52 x 0.19inch] Size 2.0 31.5 x 42.8 x 4.95mm [1.24 x 1.69 x 0.19inch]
Active Area	Size 1.0 30 x 20mm Size 1.5 33 x 24mm Size 2.0 36 x 26mm		

* The specifications are subject to change without prior notice