

These are the periodic tests YOU need to perform to comply with HTM 01-05

For more information or to place your order please call us on +44 (0)1279 461641

Medisafe

Testing for all Ultrasonics - Our products are universal!

Ultrasonic Cleaning
Order No: MED1800

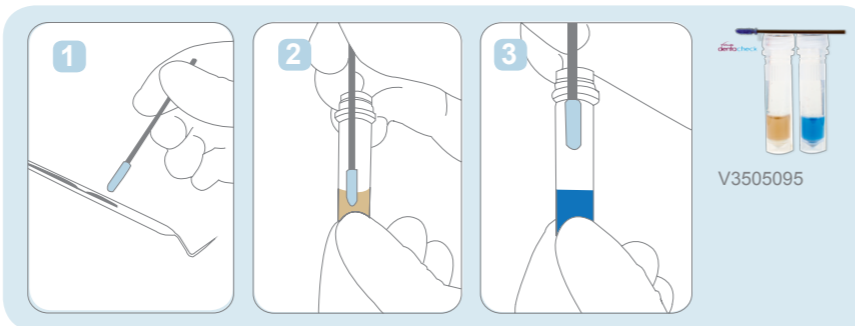


Ultrasonic cleaning in a well maintained machine enhances removal of debris HTM 01-05 page 19.3.26

Daily

PERFORM DAILY CHECKS

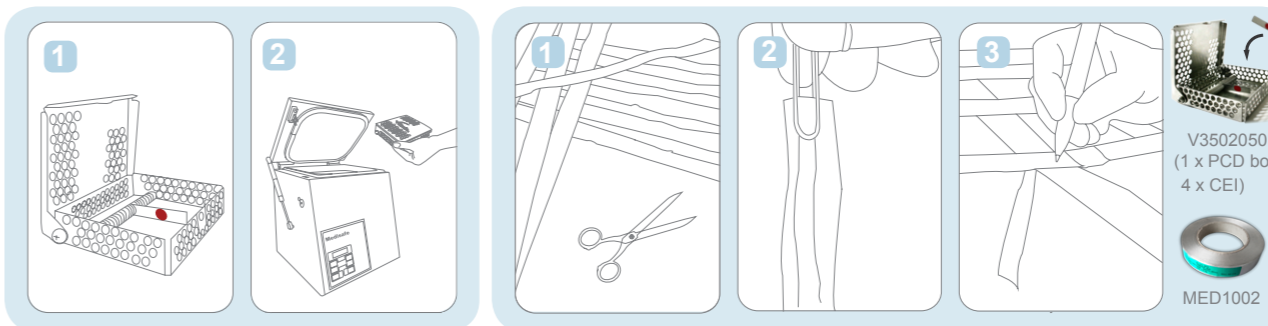
Weekly



DentaCheck - Test kit for detection of protein residues

1. Moisten swab with RO water and swab surface of reprocessed instrument. 2. Unscrew cap of test vial and swirl swab in brown reagent. 3. Disguard swab in clinical waste and screw cap back on. Result occurs within 10 seconds. Check reagent for a colour change, if the reagent turns blue this indicates protein residue has been detected. This has failed. If there is no colour change, no protein has been detected and the instruments are clean and safe to be sterilized. 4. Record result for traceability in logbook.

Quarterly

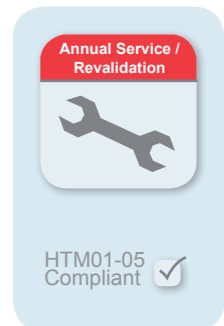


Standard PCD and CEI Starter Kit - Cleaning Efficacy Test

1. Remove Cleaning Efficacy Indicator from foil pouch and insert in coil in central position of Standard PCD. Test soil must not be covered. 2. Place PCD at representative location in washer basket. 3. Upon completion of full wash cycle remove CEI from PCD and visually assess cleaning performance. 5. Compare indicator with assessment-aid. 6. Record result and release according to positive test result.

Foil Test - 1. Cut 9 strips (120mm longer than depth of bath) 2. Insert paper clip to weigh down foil 3. Fill bath with liquid & detergent to required level 4. Place 3 strips of adhesive tape horizontally & vertically across bath 5. Place 9 strips of foil under intersecting tapes and number intersections 6. Operate bath 7. Remove strips & blot dry 8. Erosion on each strip validates cycle 9. Record result

Annually



Carried out by a fully accredited engineer to ensure machine continues to run smoothly & provides compliancy as per HTM01-05 page 59, 14.1 & 14.2

Testing for all Washer Disinfectors - Our products are universal!

Washer Disinfector
Order No: MED1360

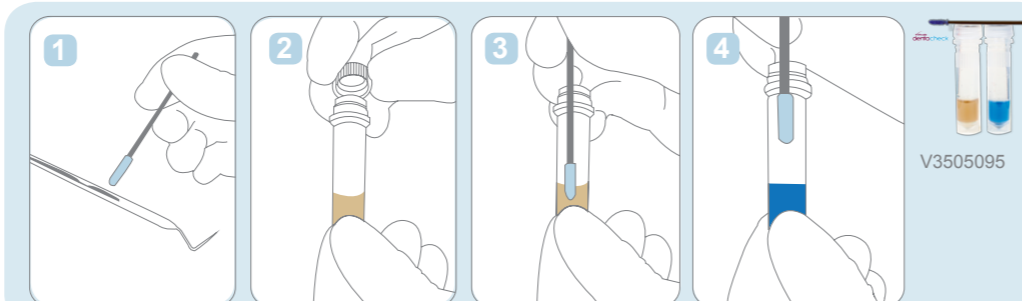


Using a washer disinfector is the preferred method of cleaning dental instruments. HTM 01-05 page 17.3.13

Daily

PERFORM DAILY CHECKS

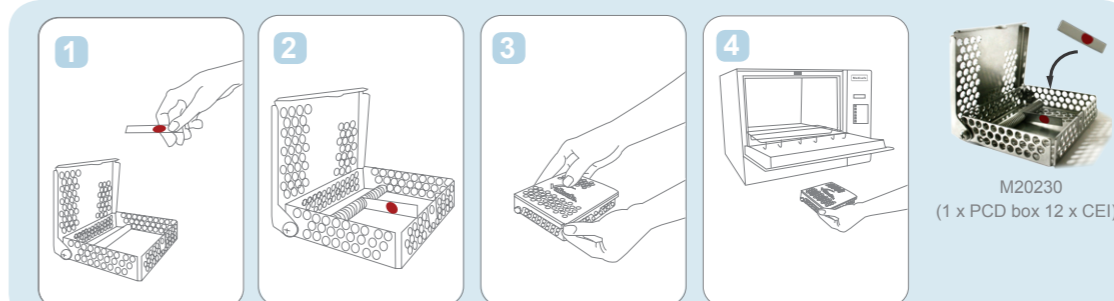
Weekly



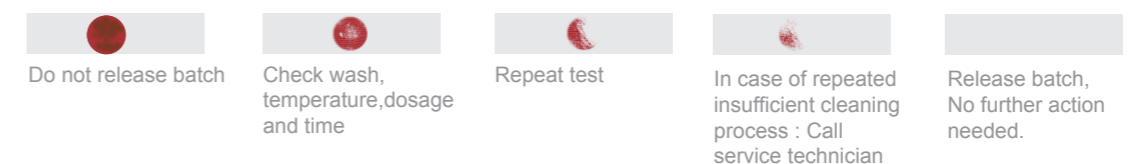
Interpretation Guide for DentaCheck - Test kit for detection of protein residues



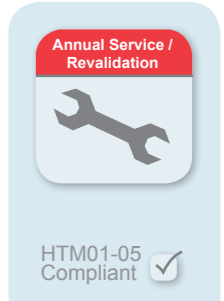
Monthly



Interpretation Guide for PCD and CEI Starter Kit



Annually



Carried out by a fully accredited engineer to ensure machine continues to run smoothly & provides compliancy as per HTM01-05 page 57, 13.1 & 13.2

Testing for all 'B' Type Autoclaves

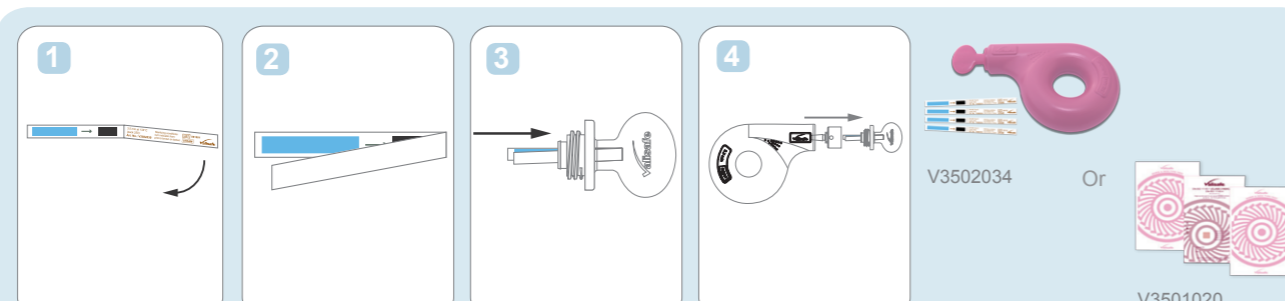
Vacuum Sterilisers B Type

Order No: MED1915



Type B vacuum sterilisers incorporate a vacuum stage and are designed to reprocess load type such as hollow air retentive and packaged loads HTM 01-05 page 22.4.5

Daily

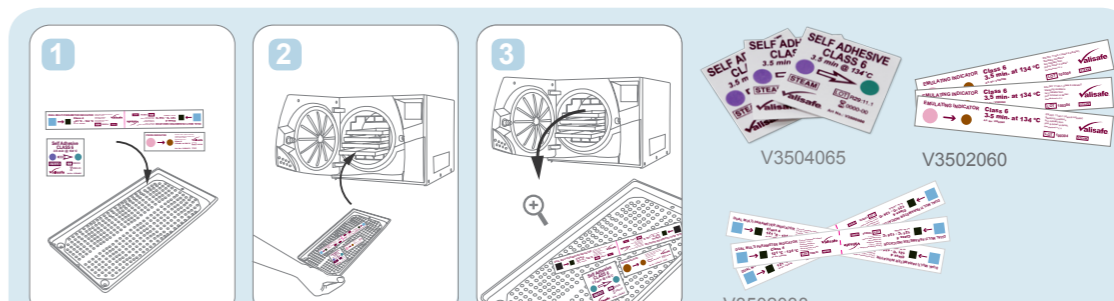


EN867-5 Helix Test

1. Remove the Helix cap. 2. Fold the indicator strip at the line. 3. Place the indicator strip with the folded side first in the Helix cap. 4. Screw the cap into the Helix Tube. 5. The indicator will turn from blue to darker or black at 134 °C at 3 min. 6. The indicator is supplied with adhesive on the reverse side. This strip can easily attach to notes for traceability.

Or Daily Bowie and Dick Type Test - 1. Place the Bowie & Dick Type Test in the center of the autoclave chamber. 2. Run a 3.5 minutes 134°C sterilization cycle. 3. Take the pack from the sterilizer and leave to accommodate for approx. 5 minutes. 4. Open the pack and interpret the results of indicator inside pack. The test sheet must have changed from pink to brown or darker. 5. Record the results on the test sheet with relevant data and file for traceability.

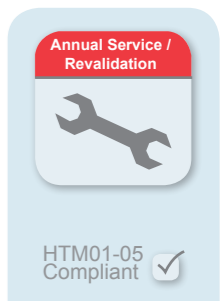
Additional Testing - Each Cycle / Per Tray



Class 6 / Class 4

1. The Valisafe Class 4 / Class 6 Indicator is to be placed inside each pack or with every tray or each load. 2. Undertake the prescribed sterilization process in the autoclave. 3. When process is complete, open pack and remove indicator strip. Compare changed indicator with the reference colour. The indicator should present an even colour at least as dark as the reference colour. 4. Record results in log book or record sheets.

Annually



Carried out by a fully accredited engineer to ensure machine continues to run smoothly & provides compliancy as per HTM01-05 page 55, 12.1 & 12.2

For product demonstration videos please visit : www.medisafedental.com/video.html