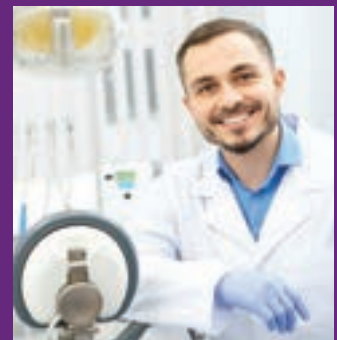




# What does dental practice success look like for you?



*We are delighted with the end result. The practice looks good and, more importantly, works ergonomically and efficiently.*

**Dr Gary Moynes**  
7Oaks Clinic

# However you define success, we're here to help you achieve it

## We are proud to introduce you to our new service - Dental Practice Success Built-in.

Our unique approach goes beyond providing dental equipment and services project by project. We always focus on making your practice the success it deserves to be.

We start by understanding, discussing and agreeing what success looks like for your practice.

We then recommend the room design, equipment and service package that maximises the efficiencies and effectiveness of your operations. All of this is done to create customer and staff experiences that are highly recommended.

We continue adding value by keeping you updated on the latest innovations in service, design and equipment for dentistry.

### This is Dental Practice Success Built-in



Design

Spacial Planning  
Interior Design  
Practice Layouts  
Surgery Design



Build

Start to Finish  
Fit-out  
Squat Practices  
Refurbishments  
Partitioning  
Electrics  
Plumbing



Equip

Dental Chairs  
Lighting  
Air Compressors  
Suction Pumps  
Autoclaves  
Handpieces  
Cabinetry  
Digital Imaging



Maintain

Staff Training  
On-Going Review  
Service Schedules  
Peace of Mind  
High Performance

# We're here to help you succeed

Our purpose is to enable you to be successful - in all the ways you value and appreciate the most. We thrive on maximising every opportunity to help you and your team be at your best!

We do this by designing, building and equipping high performance spaces (including treatment, decontamination, waiting and staff rooms) to work better for you, your staff, your customers and your business.

The sense of achievement this brings, and knowing that we make a tangible and lasting difference to dental practitioners like you, drives us forward.

**If this sounds of interest, we're looking forward to discussing what success looks like for you.**

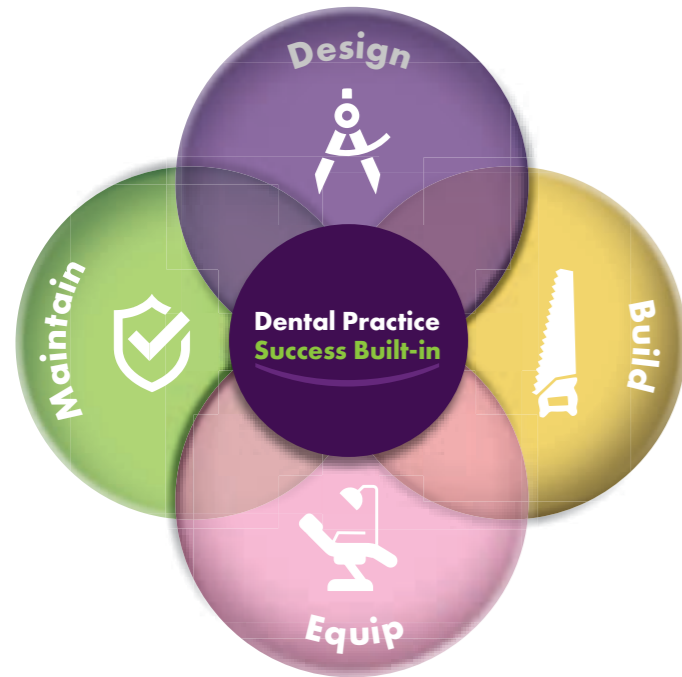


**Dental Practice Success Built-in**



"Everything we do is focused on helping you to make your dental practice a success."

**Chester Boyt**  
Project and Equipment Director



## Our offer

We create the high performance design and operations set-up and support services for your dental practice to be successful.

Working with us is like having an active business partner for your practice.

## What we do

We design, build, equip and maintain dental practices for success.

We provide complete solutions for:

- Dental professionals
- Groups of practices
- Hospital trusts

We create, improve and maintain:

- Dental surgeries
- Decontamination spaces
- Waiting rooms
- Staff rooms
- Reception areas



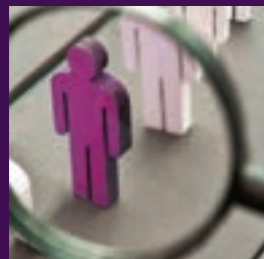
*I would like to express my gratitude to you and your team for your professionalism and prompt response when our dental chair packed up.*

*You attended the same day, removed the damaged chair and installed a rental to allow us to continue practicing.*

**Birchington Dental Care**

## Our values

The beliefs that guide us in all we do and how we do it.



**Focus on the customer**



**Openness**



**Right solution**



**Attention to detail**



## How we help you

- We create operational spaces and treatment rooms enabling you and your team to operate efficiently and deliver highly-rated staff and customer experiences
- We enable you to establish, build and reinforce your professional reputation by doing what's required, when it's required
- We advise on CQC compliance for your dental practice
- We do all this in ways that are operationally and ergonomically efficient and effective for your dental practice



## How we work with you

Working in partnership with you, we design, build and maintain your spaces and equipment in ways that enhance operational efficiencies and effectiveness across your dental practice.

## Our unique 3 stage approach

### STAGE 1

**YOUR Dental Practice Success Criteria**

Together, we identify what success looks like for your dental practice business.

### STAGE 2

**YOUR Dental Practice Success Plan**

Applying our knowledge and design skills, we propose the design and right-specification equipment solution for your practice and create a service plan for your practice to achieve maximum up-time.

### STAGE 3

**YOUR Dental Practice Success Delivery & Check-In**

Ongoing, we review how your operational spaces and equipment are working for you and keep you up-to-date with the latest ways to keep every space operating as efficiently and effectively as possible.

## All supported by our set-up for success guarantee

- ✓ Operational efficiencies and customer experience designed to make your practice successful
- ✓ Cost effectiveness built-in
- ✓ Compliance assured



# Dental Practice Success How we work



Environment



Equipment



Maintenance



Experience

**We provide you with the complete fit-out solution.**

**From comprehensive surgery or decontamination room fit-out to full practice design and build, we approach every detail with minimal business disruption and on-going success in mind.**

Carefully consulting with you, we ascertain how each and every design decision is made to enhance operating effectiveness and create experiences for staff and customers that are highly recommended.

- Environment - we optimise your environment for customer and staff experience and advise you on CQC compliance
- Equipment - we carefully select and install equipment for optimum performance within each of your practice spaces
- Maintenance - we carry-out maintenance tasks for your business continuity and maximum revenue through maximum operations uptime
- Experience – we help you to create experiences that are highly recommended by your customers and staff



Design



- ✓ Spacial Planning
- ✓ Interior Design
- ✓ Practice Layouts
- ✓ Surgery Design



*We would highly recommend the awesome Eclipse team who guided us through the design process, finishing touches and colour schemes.*

*Their ability to combine build works with equipment and dental engineering makes it so much easier and better value.*

**Mena Williams**

Kids-Dental at Marsh House

## Design

With a clear understanding of what success looks like for your dental practice business, we apply our knowledge and design skills.

We'll carefully consider and advise you on:

- Finding the perfect location
- Renovating an existing practice
- Architectural services, including planning and building regulations
- Spatial planning, including staff and patient workflows
- Industry standards including compliance, infection prevention, health & safety and disabled access
- Equipment specification, regarding architectural design and your requirements



- ✓ Start to Finish
- ✓ Fit-out
- ✓ Squat Practices
- ✓ Refurbishments
- ✓ Partitioning
- ✓ Electrics
- ✓ Plumbing




## Build

Whether you're making small changes, building an extension or refitting your entire practice, we implement your Dental Practice Operations Success Plan to minimise disruption and maximise up-time.

We assign your Eclipse Dental Project Manager and a team of fully qualified and reliable tradespeople to ensure your dental practice transformation is completed efficiently.

Your new spaces could include:

- Reception
- Waiting room
- Surgery
- Decontamination room
- Consultation room
- Imaging room
- Plant room
- Staff room

 Start to finish refurbishment service with minimal disruption and downtime. We often take care of simple refurbishment projects within two weeks or while you're on holiday.



Eclipse helped me to refurbish my two dental surgeries. I knew exactly what I wanted, however, being right in the centre of Brighton we were restricted in terms of space. Eclipse listened to my ideas, they added a lot to them and improved my initial design.

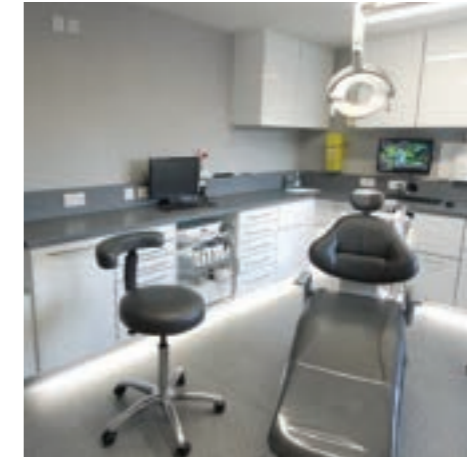
They had loads of realistic and creative ideas for a 21st century dental practice! Two surgeries were refurbished on time without any interruption of our clinics. A decent company and people to work with. Thank you.

**Dr Ramin Hassani**

Norfolk Square  
Dental Practice



- ✓ Dental Chairs
- ✓ Lighting
- ✓ Air Compressors
- ✓ Suction Pumps
- ✓ Autoclaves
- ✓ Handpieces
- ✓ Cabinetry
- ✓ X-Rays
- ✓ Digital Imaging



## Equip

We partner with industry-leading designers and manufacturers to deliver the right tools, equipment and technology for your dental practice.

- Ancar, Belmont and Heka patient chairs
- Dental handpieces, air compressors and suction pumps
- Digital imaging, x-ray and reverse osmosis units



Eclipse were always accommodating of any requests and would always go the extra mile.

I look forward to working with them for many years to come.

**Dr S. Yusef Moazzam Ali**

Ivy House  
Dental Practice



- ✓ Staff Training
- ✓ On-Going Review
- ✓ Service Schedules
- ✓ Peace of Mind
- ✓ High Performance



We chose Eclipse Dental to help design and install two new surgeries in our practice. From start to finish their team were fantastic. Very professional and hard working. Eclipse are very flexible and listen to your needs

We are very impressed with the quality of workmanship they delivered. I would not hesitate to continue recommending Eclipse.

**Dr Paul John Jones**

Cyfarthfa Dental Care

## Maintain

Once your new spaces are complete, we'll fully train your staff and review how everything is working for you on an on-going basis.

We'll regularly consult with you and keep you up-to-date with the latest ways to keep your spaces operating as efficiently and effectively as possible. You'll be reassured that your spaces are operating at the highest performance levels.

We'll arrange reliable service schedules and you'll have the peace of mind that our engineers are on call for same day response if required.

### Emergency Response

We always attend to repair calls as soon as possible, but if you need an engineer urgently or the same day, please request our emergency call-out service.

We will prioritise your emergency and ensure it results in minimal down-time for your practice.



### Remote Support

We quickly fix issues over the phone or via WhatsApp video call to minimise downtime.

# How the right products help you achieve dental practice success

We apply our knowledge and expertise in design and equipment to the particular context and requirements of your uniquely individual dental practice rooms and spaces.

We select and recommend the right products to boost the success of your dental practice through the added safety, efficiency and productivity they deliver.

We work closely with leading dental product designers and manufacturers, and always keep abreast of the latest developments industry-wide.



**Vaech EzRay Air Hand Held Intraoral X-ray System** – the world's lightest intraoral portable x-ray device.

### X-ray solutions

If wall space in your dental practice is limited (or your walls are unable to safely support the weight of a wall-mounted x-ray system), a handheld portable x-ray is the ideal solution.

They also add freedom of movement for your dental practitioners and can reduce anxiety and stress for your patients.

Dental staff and patients alike often appreciate the benefits of mobile x-rays.



**Vatech Smart Plus SP CBCT Scanner** – one scan delivers a CT image and an Auto Pano image.

### CBCT scanner solutions

A wall-mounted CBCT scanner is an ideal way to save space, especially if your dental practice design and build doesn't include separate x-ray rooms.

We often install these units within surgeries or treatment rooms for easy access and comfortable use.

We select and recommend the most versatile CBCT scanners based upon their ergonomic design, installation options and image quality.



Ceramic wall-mounted basins for surgeries and decontamination rooms.

### Basin solutions

To help keep your surgeries and decontamination rooms HTM compliant, we provide and install fully HTM compliant basin kits.

High quality ceramics, long lever taps, PVC splashbacks and off-set waste kits deliver comfort and reliability to help your staff remain safe and productive.

A simple yet important installation, we take extra care to ensure every basin kit we install works optimally within each and every dental practice room.



**Ancar S-Line Knee Break with Whip Arm S3W RC** – a classic elevation and knee break patient chair with a whip arm instrument tray.

### Dental chair solutions

Knee-break dental chairs are an ideal space-saving solution, especially where you have small treatment rooms.

They help elderly patients (or less mobile patients of all ages) more comfortably take their seat for treatment - a pleasant and appreciated start to every appointment.

They also provide the option of a more comfortable consultation position for all patients and dentists - ideal for discussing treatment plans and costs.

## Products in stock for rapid installation

We have these products (and many more) in stock at our premises.

We're able to minimise your practice downtime with our rapid (often next day) installation.

**This is Dental Practice Success Built-in**



# We help you perform at your best

- ✓ Maintenance
- ✓ Repair
- ✓ Rental equipment
- ✓ Emergency response
- ✓ Compliance
- ✓ Annual servicing

We carefully plan service visits and carry out same day repairs as required because uptime is integral to your dental practice success.

We go beyond maintenance and simply 'fixing problems'. We ensure each piece of equipment you rely upon is performing at the highest levels with minimum downtime.

When your dental equipment is looked after and each space is performing at its best, that's Dental Practice Success Built-in.



**Unlimited Technical Support**  
Our expert team are only a phone call away.



*We have had the chairs for some time now and are happy with them.*

*They serve what we need them for.*

*The aftercare service is excellent.*

**Denise Bennett**

The Hillingdon Hospitals NHS Foundation Trust

## How we add value for you

We carefully plan service visits (and carry out same day repairs as required) because uptime is integral to your dental practice success.

We go beyond maintenance and simply 'fixing problems'.

We ensure each piece of equipment you rely upon is performing at the highest levels with minimum downtime.

When your dental equipment is looked after and each space is performing at its best, that's Dental Practice Success Built-in.



### Loan equipment for operations uptime

In the unlikely event that we're unable to make a repair on-site, we'll exchange your equipment for a loan unit whilst we carry out the repair in our workshop.

**We'll always keep you operating!**

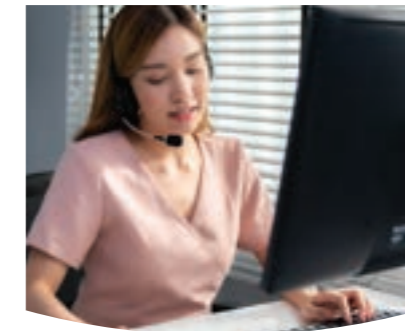


### Maintenance

With the success of your dental practice in mind, our in-house team of expert service engineers are responsive, efficient and always on time!

#### Service visits & repairs

Your peace of mind is assured through our carefully planned service visits and same-day repair services.



### Emergency response

Uptime is integral to your dental practice success. That's why we provide instant remote support, carefully plan service visits and carry out same day repairs as required.

#### Minimal down-time

We will prioritise your emergency and ensure it results in minimal down-time for your practice.



### CQC compliance

Our regular check-ins will help your dental practice remain CQC compliant.

#### Certification & testing

We provide certification and testing for pressure vessels and x-rays as well as service reports for your CQC compliance files.



### Equipment rental including maintenance

We provide dental equipment rental packages with your service, maintenance and emergency response agreements included.



### Annual servicing

#### EclipseCare Service Plans

Our bespoke EclipseCare Service Plans are tailored to suit your requirements and preferences.

Register with EclipseCare for complete peace of mind regarding annual servicing or equipment breakdowns.

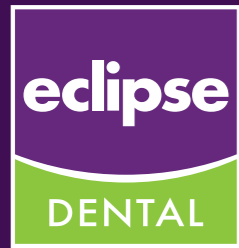


### Repair

Uptime is critical to on-going business success.

We understand how downtime due to equipment malfunction or breakdown can instantly reduce your capabilities.

That's why our expert team of engineers are only a phone call away.



Dental Practice  
Success Built-in

# We're here to help you succeed



## We are proud to be a family business.

Since 1998, we have provided fit-out and equipment services to help dental practices across London and the South East to become more successful.

We look forward to meeting you!

**-Chester, Ralph, John, Graham & Timothy Boyt, and the Eclipse Dental team.**



### THE LODGE DENTAL

*Eclipse listened to my requirements and concerns and then helped me find solutions to make the surgery exactly how I wanted it to be. Nothing was too much for them and they were extremely helpful with the fine details.*

*The workmen were very professional, friendly and considerate to the workings of the business. They delivered a perfect job in 8 working days!*

*The surgery looks amazing. I cannot recommend Eclipse highly enough. They have a fantastic 'can do' attitude. They give you what you want at a very good price and take all the hassle away from you.*

#### Dr. Tim Earl

The Lodge Dental Practice Limited

# Our location

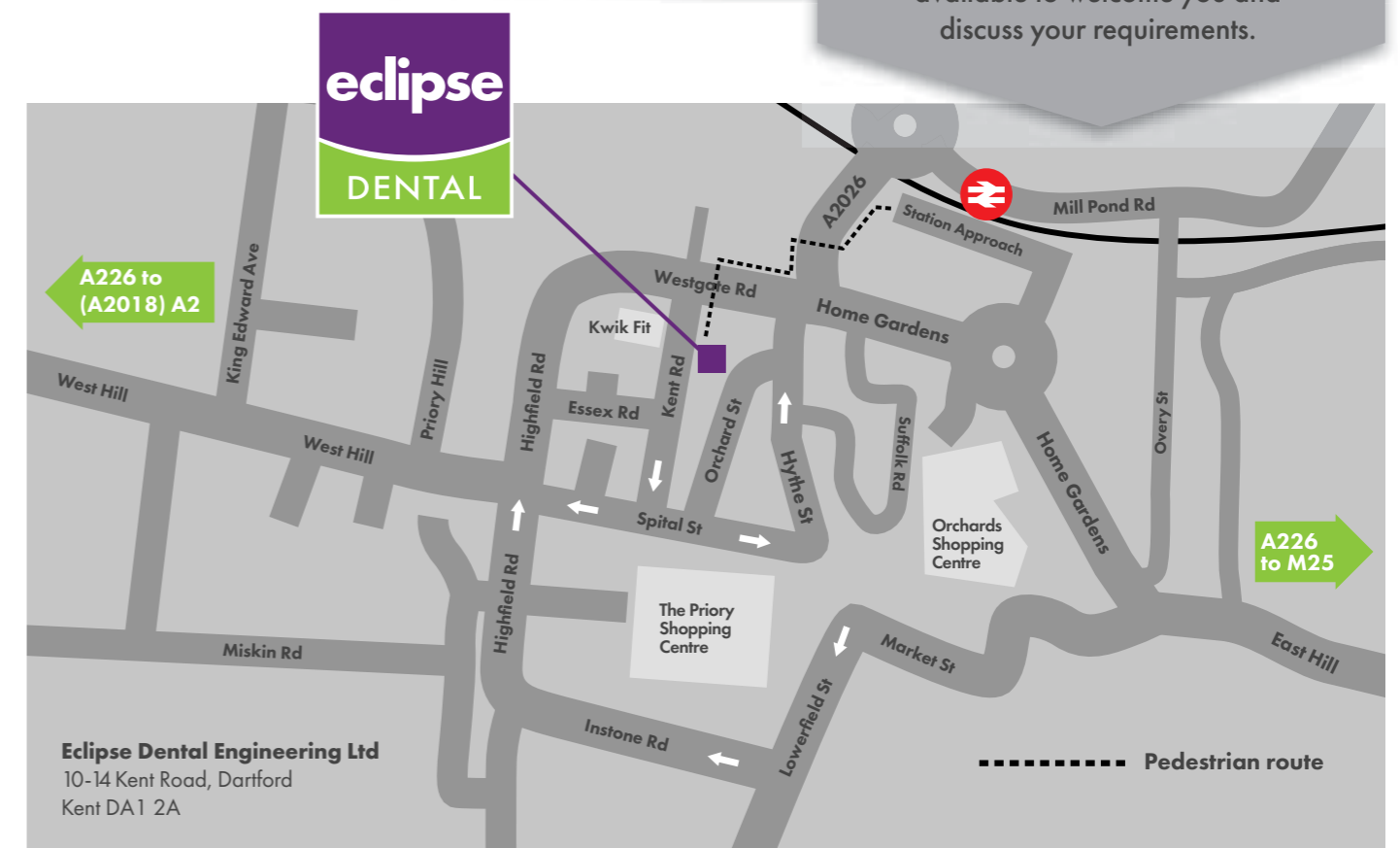


Eclipse Dental is strategically located in Dartford with excellent road connections to London and the Home Counties via the M25, M20, M2 and A2 . We are only 15 miles from the City of London.

## Visit our showroom

If you would like to visit our showroom, we would be delighted to see you.

Just give us a call to arrange a time to ensure one of our consultants is available to welcome you and discuss your requirements.



**Eclipse Dental Engineering Ltd**  
10-14 Kent Road, Dartford  
Kent DA1 2A

..... Pedestrian route



## Contact us in the ways that work best for you

Call us:



01322 292222

Email us:



enquiries@eclipse-dental.com

Online contact form:



eclipse-dental.com/contact-us

Live chat:



eclipse-dental.com

WhatsApp:



07384 796802



Dental Practice  
Success Built-in

ED/001



Eclipse Dental Engineering Ltd, 10-14 Kent Road, Dartford, Kent DA1 2AJ

E: info@eclipse-dental.com [eclipse-dental.com](http://eclipse-dental.com)

