

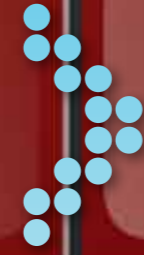
# Gendex GXDP-300 – for expert images made easy.



KaVo Imaging *Expert Series*



# KaVo combines Dental Excellence with innovative imaging tradition.



KaVo Imaging *Expert Series*

## A big discovery in sight.

It has been just over a century since Wilhelm Conrad Roentgen's discovery of the X-ray in 1895. Since then, radiology has transformed from a scientific curiosity to a medical and dental necessity. The Gendex lineage can be traced back to Roentgen's time and extends to today, where Gendex is an international leader in dental radiology and digital imaging.

## From 1893 to 2011 – 108 years of progress.

Victor Electric was founded in 1893 in Chicago and was one of the earliest X-ray equipment suppliers worldwide. From the start, Victor Medical manufactured a variety of electro-therapeutic devices, growing into a successful business. The company became part of the General Electric Medical business unit in 1926. In 1983, the dental radiology division split off as Gendex, to become an independent corporation. Gendex purchased the European business of Philips dental X-ray operation in 1991, further strengthening its position as a world leader in dental X-ray. And in 2004, the latest chapter unfolded as Gendex became part of the KaVo Dental Group – a new success story began.

## Panoramic imaging – the foundation of modern dentistry.

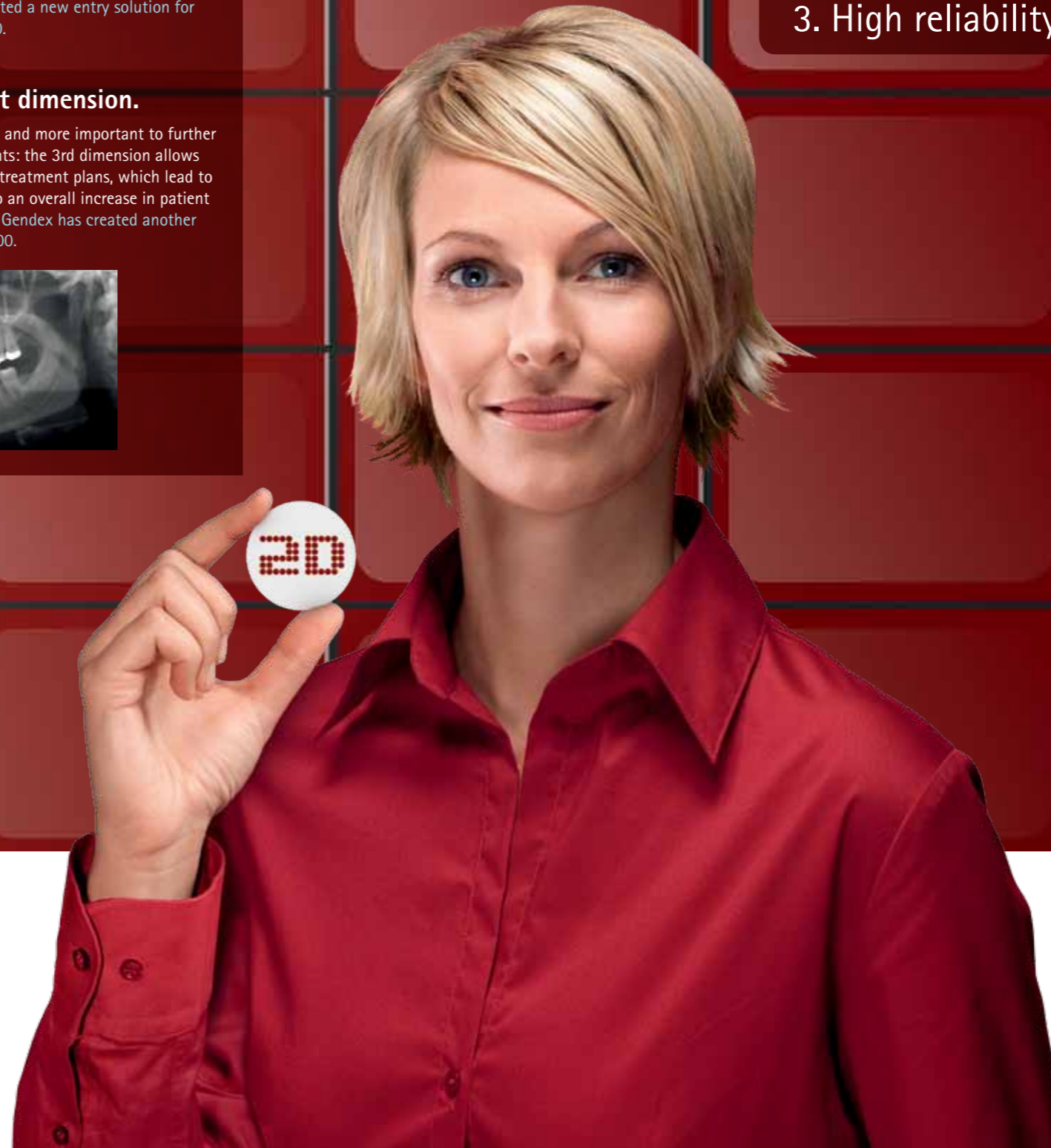
The panoramic X-ray projection method was invented by Prof. Paatero in the early 1950s. By providing an excellent overview of the patients' oral status, it soon became the standard diagnostic tool for dentists all over the world. Based on the broad expertise in panoramic imaging, Gendex has created a new entry solution for this technology – the new GXDP-300.

## The next step, the next dimension.

Every single day, it is becoming more and more important to further enhance the way you see your patients: the 3rd dimension allows you to create anatomically accurate treatment plans, which lead to successful surgical procedures and to an overall increase in patient care quality. For the next dimension, Gendex has created another efficient solution – the new GXDP-700.



1. Efficient configurations
2. Easy-to-use
3. High reliability



Gendex GXDP-300  
**Panoramic**  
X-Ray device

# Designed for function, made for performance.

Want to take X-rays efficiently and with minimal effort? Then you will be thrilled with the Gendex GXDP-300. Four comprehensive programmes cover your essential needs. Together with EasyPosition™, it is simply reliable quality.

**The Gendex GXDP-300 – for expert images made easy.**



## Efficient – The economic solution for the practice.

- Exceptionally cost-effective
- 4 programs for complete routine diagnostics
- 'AlwaysReady' function avoids mistakes and saves time



## Easy-to-use – Perfect results, fast and safe.

- Touch panel display for comprehensive and easy use
- EasyPosition™ for effective and safe positioning



## Reliable – The new Gendex quality.

- Highest quality, exceeding European standards
- Functional Gendex design



## Tried and tested – Powerful software tools for your diagnosis.

- VixWin Platinum for effective 2D image processing
- Comprehensive integration into the practice workflow



The GXDP-300 not only looks like a high-tech piece of dental equipment, it is a truly functional unit built for performance. The elegant, yet rugged design was developed to provide you with years and years of trouble-free operation.

A compact footprint assures that the unit will fit into any office environment. The built-in LAN connectivity allows for easy integration into any office practice network. The GXDP-300 was built for saving your precious time and increasing your efficiency.

# Imaging projections for GXDP-300.



Standard panorama



Pediatric panorama



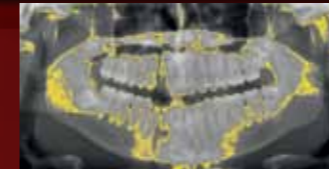
TMJ



Bitewing



# Powerful tools for your diagnosis.



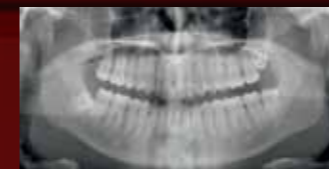
## Isodensity:

the function replaces a selectable range of gray shades with a colour. This may be used to better visualize areas of uniform radiographic density.



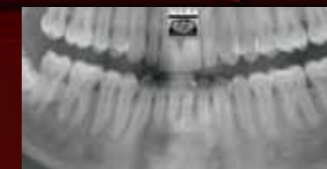
## Reverse:

the function converts negative into positive and vice versa, i.e. white to black and black to white.



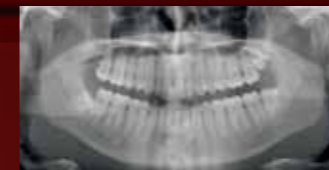
## Equalize:

the function reassigns brightness levels in the image area so that the integral of the resulting histogram increases linearly with brightness level. It is particularly effective on images which are under or over exposed.



## Magnify:

the function opens a window on the image, magnifying the selected area. Size and magnification value can be selected. The magnified area can be displayed either normal, equalized or reversed.



## Optimizer:

improves visualization of morphological structures in the image by enhancing the edges. The intensity of the filter is fully customizable.



## Gray selection:

by moving the cursor along the selected line, the gray level of each pixel is displayed.



## Emboss:

this is a spatial filter providing a simulated 3D image.



## Length Measurement:

Returns the total length of a set of segments based on a calibrated distance.

## Technical specifications.

### GXDP-300 DEVICE

Weight	120 kg
Height of Chin Rest	default column: 950-1750 mm ( $\pm 10$ mm) short column: 860-1660 mm ( $\pm 10$ mm)
Source to Image layer	500 mm ( $\pm 10$ mm)
Magnification	1.25
Line current	100 - 240 VAC / 220-240 VAC
Line Power	at 100/120 VAC: 1,6 A long term, 10 A momentary  at 220/240 VAC: 1 A long term, 4 A momentary
Line Fusing	at 100/120 VAC: 16 A at 220/240 VAC: 10 A
Focal Spot	0.5 according IEC 60336 (1993)
Anode Voltage	66,70 and 73 kV ( $\pm 4$ kV)
Anode Current	8 mA ( $\pm 1$ mA)
Filtration	total filtration min. 2,8 mm Al at 70 kV
2D Sensor pixel size	96 microns
Active Sensor Surface	147.5 x 6.1 mm

### PC REQUIREMENTS

	MINIMUM	RECOMMENDED
Operating System	Microsoft® Windows® XP with Servicepack SP3	Microsoft® Windows® 7 32 bit
Processor	Intel® Celeron® M 1.6. GHz	Intel® Core® 2 Duo 2.4 GHz
Memory	512 MB	2 GB
Hard Disk	40 GB	120 GB
Display Settings	1024 x 768 24bit	1280 x 1024 24bit
Video Memory	100 Mbit	1 Gbit
Driver	GxPicture 3.2	GxPicture 3.2. or higher
Standards	IEC 60950 not in patient reach	IEC 60601

## Options.

### DEVICE OPTIONS

Default column 2316 mm height	x
Short column 2226 mm height	x
Starter package of accessories	•

### ACCESSORIES

Biteblock*	o
Bitestick*	o
Chinrest for edentulous patients*	o
Bitestick for edentulous patients*	o
TMJ nose support long*	o
TMJ nose support short*	o
Hygiene covers for biteblock*	o
Hygiene covers for nose support*	o
Baseplate for showroom devices	o
Constancy check kit digital with 1,8 mm Cu	o

\* included in the starter kit

### SOFTWARE VixWin PLATINUM

Standard office license	•
Standard DICOM	o
Advanced DICOM	o

### CAPTION

• Included by default
x Choose on order
o Order separately
- Not available

