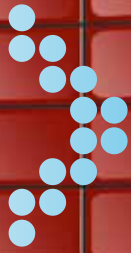
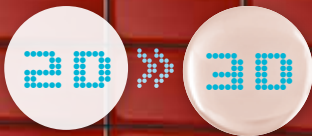


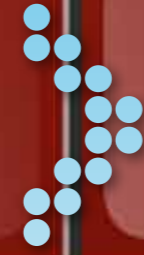
Gendex GXDP-700 – as multifaceted as each expert requires.



KaVo Imaging *Expert Series*



KaVo combines Dental Excellence with innovative imaging tradition.



KaVo Imaging *Expert Series*

A big discovery in sight.

It has been just over a century since Wilhelm Conrad Roentgen's discovery of the X-ray in 1895. Since then, radiology has transformed from a scientific curiosity to a medical and dental necessity. The Gendex lineage can be traced back to Roentgen's time and extends to today, where Gendex is an international leader in dental radiology and digital imaging.

From 1893 to 2011 – 108 years of progress.

Victor Electric was founded in 1893 in Chicago and was one of the earliest X-ray equipment suppliers worldwide. From the start, Victor Medical manufactured a variety of electro-therapeutic devices, growing into a successful business. The company became part of the General Electric Medical business unit in 1926. In 1983, the dental radiology division split off as Gendex, to become an independent corporation. Gendex purchased the European business of Philips dental X-ray operation in 1991, further strengthening its position as a world leader in dental X-ray. And in 2004, the latest chapter unfolded as Gendex became part of the KaVo Dental Group – a new success story began.

Panoramic imaging – the foundation of modern dentistry.

The panoramic X-ray projection method was invented by Prof. Paatero in the early 1950s. By providing an excellent overview of the patients' oral status, it soon became the standard diagnostic tool for dentists all over the world. Based on the broad expertise in panoramic imaging, Gendex has created a new entry solution for this technology – the new GXDP-300.

The next step, the next dimension.

Every single day, it is becoming more and more important to further enhance the way you see your patients: the 3rd dimension allows you to create anatomically accurate treatment plans, which lead to successful surgical procedures and to an overall increase in patient care quality. For the next dimension, Gendex has created another efficient solution – the new GXDP-700.



1. Efficient configurations
2. Easy-to-use
3. High reliability



Gendex GXDP-700
3 in 1
PAN • CEPH • 3D

Your economic entry into the 2D/3D world.

The flexible Gendex GXDP-700 imaging system adapts itself completely to your needs: opt for Ceph and 3D, now or later on, as you wish. In every case, you can rely on excellent image quality and its ease of use.

The Gendex GXDP-700 – as multifaceted as each expert requires.



Efficient – Functions for Expert requirements.

- 12 panorama and 5 ceph programs for comprehensive diagnostics
- Growing panoramic imaging with ceph and 3D upgrade options
- Add 6 x 4 cm Ø, volume for detailed findings (extendable to 6 x 8 cm Ø)



Easy-to-use – Perfect results in no time.

- Touch panel display, fast to use and easy to understand
- PerfectScout™ precise 3D volume positioning
- SmartLogic™ remembers your workflow



Reliable – Repeatable quality every time.

- Production exceeds European quality standards
- Functional Gendex design
- EasyPosition™ for stable and repeatable patient positioning

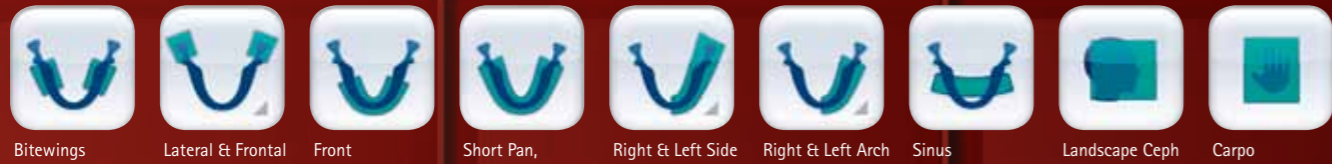


Time-tested – Powerful 2D/3D software tools for your diagnostics.

- VixWin Platinum for effective 2D image processing
- Invivo for innovative 3D analysis
- Comprehensive integration into the practice organization



2D imaging – the foundation of modern dental diagnostics.



Standard Panoramic



Latero-Lateral Ceph



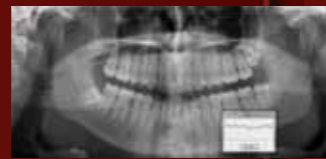
Antero-Posterior Ceph

Powerful 2D imaging software tools*.



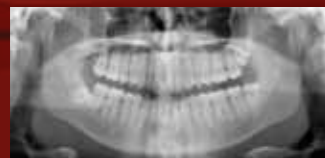
Optimizer:

improves visualization of morphological structures in the image by enhancing the edges. The intensity of the filter is fully customizable.



Gray selection:

by moving the cursor along the selected line, the gray level of each pixel is displayed.



Equalize:

the function reassigns brightness levels in the image area so that the integral of the resulting histogram increases linearly with brightness level. It is particularly effective on images which are under or over exposed.

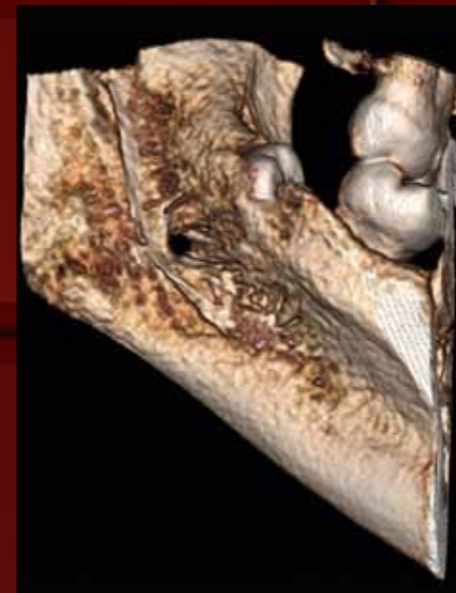


Magnify:

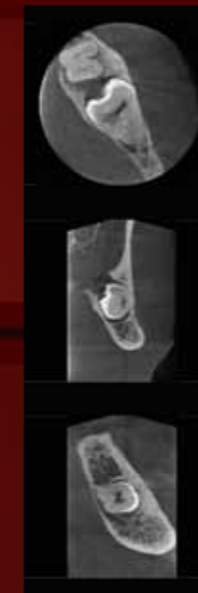
the function opens a window on the image, magnifying the selected area. Size and magnification value can be selected. The magnified area can be displayed either normal, equalized or reversed.

*The following examples are an excerpt showing only 4 of the many tools available.

3D imaging – the next dimension in detailed analysis and implant planning.



Volume rendering



Axial

Coronal

Sagittal



Precise implant planning.

The Invivo5 software allows the placement of implants directly into 3D DICOM data, with no conversion or modeling necessary. Treatment plan in full 3D anatomy with restorative outcomes in mind. Immediate implant planning makes Invivo5 a very powerful patient consultation and communication tool that can be used chair-side.



Technical specifications.

Weight	200 kg (no Ceph)
Height of Chin Rest	default column: 950–1750 mm (±10 mm) short column: 860–1660 mm (±10 mm)
Source to Image layer	500 mm (± 10 mm)
Line current	100 - 240 VAC 50/60Hz
Line Power	10 A at 230 VAC, 15 A at 110 VAC
Anode Voltage	57 - 90 kV
Anode Current	max 16 mA
Focal Spot	0.5 according IEC 60336 (1993)
Filtration	total filtration >3,2 mm Al
2D Sensor pixel size	100 microns
3D FOV	61 x 41 mm (H x D) optional 61 x 78 mm (H x D)
Pan image size	2-4 MB (65536 gray levels)
Ceph image size	3-5 MB (65536 gray levels)
3D image size	150-250 MB (DICOM)

PC REQUIREMENTS	MINIMUM	RECOMMENDED
Operating System	Microsoft® Windows® XP with Servicepack SP3	Microsoft® Windows® 7 64 bit
Processor	Intel Core i5 with 2 GHz	Intel® i7Core 2.6 GHz
Memory	4 GB	8 GB
Hard Disk	500 GB	1 TB
Graphics Card (GPU)t	NVidia GeForce GTX 460 NVidia Driver 197.13	NVidia Quadro FX 3800 NVidia Driver 267
Display	1280 x 1024, 24 bit	1600 x 1200, 32 bit
Network	2 interfaces with 1 GB each	2 interfaces with 1 GB each
USB	2 free ports USB 2.0	2 free ports USB 2.0
Mouse	Mouse with scroll wheel	Mouse with scroll wheel
Driver	GxPicture 3.2	GxPicture 3.2 or higher
Standards	IEC 60950 not in patient reach	IEC 60601

Options.

DEVICE OPTIONS

Sensor for panorama	x
Dual use sensor for panorama/ceph	x
3D option (FoV: 6 x 4)	o
3D extension (FoV: 6 x 8)	o
Ceph arm left/right mount	o
Touch display left/right mount	x
2 fix mounted sensors	o

ACCESSORIES

Basic accessory starter kit	•
Biteblock	o
Bitesticks	o
Chinrest for edentulous patients	o
Bitestick for edentulous patients	o
TMJ nose support long	o
TMJ nose support short	o
Hygiene covers for biteblock	o
Hygiene covers for nose support	o
Baseplate for showroom devices	o

SOFTWARE VixWin

Standard office license	•
Standard DICOM	o
Advanced DICOM	o

SOFTWARE InVivo

Primary License	•
Secondary License	•
4 network licenses	•
Implant database	•
Module stitching	o
Module 3D Ceph-Analysis	o
Module Medical Design Studio	o

CAPTION

• Included by default
x choose on order
o order separately

